

Sevenoaks District

Community Safety Partnership

DRAFT - Annual Action Plan 2011 - 2012



Contents

| | |
|----------------------------|---------|
| Introduction | Page 3 |
| Priority Issues 2011-12 | Page 4 |
| Anti-Social Behaviour | Page 7 |
| Young People's Issues | Page 9 |
| Burglary and Vehicle Crime | Page 10 |
| Public Perception | Page 11 |
| Speeding Vehicles | Page 13 |
| Substance Misuse | Page 14 |
| Domestic Abuse | Page 15 |
| Glossary | Page 16 |
| Membership of Partners | Page 17 |
| Terms Of References | Page 18 |
| Partnership Structure | Page 19 |
| Map of Sevenoaks District | Page 20 |

This publication is available in large print. For a copy call (01732 227414).

www.sevenoaks.gov.uk

If you need help communicating with us or understanding this document, we can arrange for an interpreter to help you.

Please contact us on 01732 227000 stating your language and telephone number.

Action Plan 2011 - 2012

Introduction

The Sevenoaks District Community Safety Partnership brings together all of the agencies in the District who can have an impact on crime, anti-social behaviour and the fear of crime. A list of partners is set out on page 16. The Partnership has 3 key aims. They are to:

- Reduce and detect crime
- Reduce anti-social behaviour and the fear of crime
- Strengthen community involvement

Each year the Partnership, in common with all of the Community Safety Partnerships in Kent, undertakes an assessment of crime and disorder in the District, using data provided by partners and feedback from residents. The assessment identifies the priority issues for the next year using the following rationale for each community safety type:

- Whether there is significant community concern
- Whether there is an increasing trend
- Whether it contributes to a high volume of crime
- The level of harm it causes
- How well it is performing compared with other parts of Kent and similar partnerships nationally
- Whether the Partnership can add value to the work

This Action Plan identifies where we can best work together to achieve results.

Priority Issues for 2011 – 2012

The Strategic Assessment undertaken during the autumn of 2010 has identified 8 priorities for the Partnership to tackle during 2011–2012.

The 8 priorities, in no particular order, are:

- Anti-Social Behaviour
- Young People's Issues
- Burglary
- Vehicle Crime
- Speeding
- Public Perception
- Substance Misuse
- Domestic Abuse

Although the Partnership's main focus will be the 8 priorities, it will continue to monitor and plan for trends in crime and other community safety issues and address them through the Community Safety Unit's daily briefings and other tasking arrangements in order to continue to reduce recorded crime.

During 2009/10, Sevenoaks District had the lowest recorded crime in the County with the number of crimes falling by 570 crimes or 9.9% to 5,170. Crime in the District has fallen consistently since 2005/6 when there were 7,948 crimes.

Following these year on year reductions, it will be challenging to reduce crime further. Indeed, many Districts are now seeing increases in crime. However, it is anticipated that the Partnership will contribute to a further 2% reduction through the delivery of its action plan.

The Action Plan

The following pages set out the overall targets for the Community Safety Partnership and an action plan linked to each priority. The action plan does not include details about the numerous activities already undertaken by partners, town and parish councils, the voluntary sector and others as part of their day to day work, but highlights activities in addition to core work, which partners will undertake throughout the forthcoming year.

Funding and monitoring

Funding for the actions included within the Action Plan is available from a number of sources, including partners' own budgets, Home Office funding which is allocated to district Community Safety Partnerships by Kent County Council, Choosing Health funding and other small amounts of funding from a variety of sources, for example the Kent People's Trust. Regular monitoring will take place to ensure that individual projects continue to deliver positive results as well as value for money and that this Action Plan is on target.

Equalities

In preparing the action plan, issues such as equality and diversity were considered to ensure that everybody feels safe in the District.

SEVENOAKS DISTRICT COMMUNITY SAFETY PARTNERSHIP –ACTION PLAN 2011-2012

SUCCESS MEASURES

All recorded crime:

Reduce All Crime by 2%

Anti-Social Behaviour

An improvement in behaviour achieved in 80% of cases accepted by the Anti-Social Behaviour Task Group .
75% of Anti-Social Behaviour victims satisfied with action taken.

Young People's issues

Intervention projects, including the Power Project and 8-12s Project, maintained
Rate of victimisation among young people to be reduced (target to be set)

Burglary

Number of dwelling & non dwelling (shed, commercial/retail premises) burglaries to be reduced (targets to be set at year end) Target 5% reduction in both domestic and non dwelling burglary.

Vehicle Crime

Number of Vehicle Crimes to be reduced by 5% includes theft from motor vehicle and theft from.

Public Perception

Feed back given to 100% of residents who report anti-social behaviour to the Community Safety Unit (CSU)
75% of people reporting to the CSU satisfied with service receive

Speeding

Communities in areas where speeding has been identified as a top 3 priority involved in a range of speeding initiatives.

Substance Misuse

Substance Misuse Action Plan to be 85% on target

Domestic Abuse

Reduce the number of repeat incidents of Domestic Abuse by 2% by March 2013
Domestic abuse action plan to be 80% on target

Anti-Social Behaviour

Reports of Anti-Social Behaviour to the District's Anti Social Behaviour Officer showed an increase of 11% last year compared to the same period the year before, when a total of 214 reports were received in the year. This increase may be attributed to the raised profile of the Community Safety Unit. The 4 top categories reported to the Anti Social Behaviour Officer were intimidation/harassment, damage, noise and rowdy behaviour. Reports for intimidation/harassment and noise have increased, but there has been a decrease in reports of Criminal damage and rowdy behaviour. Surveys continue to highlight Anti-social behaviour as a concern for our residents, with 73% saying that this should be a priority. However, the Kent Crime & Victimization Survey indicates that people in the Sevenoaks District perceive Anti-Social Behaviour as less of a problem than is perceived in most districts in Kent. A significant improvement last year was a 58% reduction from 139 to 88 in graffiti reports to the Community Safety Unit.

| Priority Action | | Lead Agency | Other Partners | By when | Funding |
|------------------------------|----------------------------------------------------------------------------------------------------------------------------------------------------------------------------------------------------------------------------|-------------------------------------------------------------|-----------------------------------------------------------------|----------------|---------------------------------------------------|
| Anti-Social Behaviour | | | | | |
| 1.1 | Enable the CSU to take a tasking and co-ordinating role in tackling ASB in the District | CSU | All Anti Social Behaviour Task Group KCC Children & Families | December 2011 | Use of existing resources but working differently |
| 1.2 | Implement the Home Office risk assessment tool for ASB reports and ensure high risk cases are managed through ASB task Group | CSU | SDC Police Housing Associations KCC Wardens | September 2011 | Use of existing resources |
| 1.3 | Local communities more actively involved in finding solutions for ASB and taking responsibility including through PACT Panels. PACT Members identify an improvement in community safety in their areas over the past year. | Exec Group | ASB Co-ordinator CSU PACTs Local Champions | December 2011 | Use of existing resources |
| 1.4 | Where possible, work with families rather than individuals to deal with Anti-Social Behaviour, in a minimum of 20 cases. | Anti Social Behaviour Task Group KCC Children & Families | All | December 2011 | Use of existing resources but working differently |

| | Priority Action | Lead Agency | Other Partners | By when | Funding |
|-----|--------------------------------------------------------------------------------------------------------------------------------------------------------|-------------|----------------|---------|--------------------|
| 1.5 | Effective use of mobile CCTV to deter crime and anti-social behaviour. Mobile capabilities effectively deployed 9 out of 12 (75%) deployed at one time | T&CG CSU | Police | Ongoing | Existing resources |

Young People's Issues

There were 85 new entrants to the Kent Youth Justice System in Sevenoaks between July 09 and June 10, the last confirmed data available for the Strategic Assessment. Thirty three were females (38.8%) and 52 males (61.2%). Sevenoaks had a 37% decrease in the number of new entrants to the Youth Justice System, compared to the previous 12 month period. The three types of offences most frequently committed by children and young people (both males and females) in the District for the period were: Theft and Handling Stolen Goods:30.6% (74); Violence against the Person: 17.4% (42); and Criminal Damage: 15.3% (37).

The rate of children and young people in the District who are victims of crime is the lowest in Kent at 8.6 per 1000 population. The Kent average is 18.4.

The Partnership's Power Project and the 8-12s Project are respected youth diversion and support projects, assessed to have a positive effect on young people. Young people's issues, including these projects, will therefore remain a priority for the Sevenoaks District Community Safety Partnership

| | Priority Action | Lead Agency | Other Partners | By When | Funding |
|-----------------------------|--------------------------------------------------------------------------------------------------------------------------------------------------------------------------------------------------------------------|-----------------------------------------|---------------------------------|------------------------------------------------|--------------------------------------------------------------------------------------------|
| YOUNG PEOPLES ISSUES | | | | | |
| 2.1 | Achieve sustainability for the Power Project & 8-12's Project (early intervention projects). 8-12's to run in at least 4 communities 85% of young people accepted by Power Project do not go on to re-offend | SDC West Kent Extra KCC YOS | All Partners | 8-12's - Sept 2011 Power - March 2011 | Safer & Stronger Funding Explore links with business community/other grants |
| 2.2 | Targeted work with 14-19yrs olds to assist in their transition to work | KCC | Local Children's Trust Board | March 2012 | Local Children's Trust Board |
| 2.3 | Produce a directory of early intervention projects for young people, families and front line practioners. | SDC | All partners | June 2011 | Current resources |

Burglary & Vehicle Crime

Burglary Dwelling decreased by 14%, from 393 to 338 in the Strategic Assessment period, October 2009 to September 2010. However, this placed Sevenoaks only 9th best in the County and 10th in its Most Similar Group (MSG). By December 2010, this had improved to a reduction of 23.8% compared with the previous year, placing Sevenoaks 6th best in County and 8th in its Most Similar Group. When residents were asked about their concerns about crime, burglary of homes (Burglary Dwelling) was listed as the top priority for the Sevenoaks District (73% of respondents to the 2010 Residents Panel).

Theft from motor vehicles (TFMV) fell by 15.6%, from 649 to 548 during the Strategic Assessment period. Despite this reduction, Sevenoaks ranked only 10th best in the County and 11th in its Most Similar Group. TFMV accounted for 11% of the District's total crime. **Theft of motor vehicle (TOMV)** fell by 26.2%, from 252 to 186. Sevenoaks ranked 7th best in the county and 13th in its MSG. TOMV accounts for 4% of the total crime Respondents to the Residents Panel survey 2010, rated theft from vehicles are their 6th highest concern from a list 16 crime types and theft of vehicles as their 7th highest concern **Burglary and Vehicle crime therefore remain priorities for the Partnership.**

| Priority Action | | Lead Agency | Other Partners | By When | Funding |
|-------------------------------------|--------------------------------------------------------------------------------------------------------------------------------------------------------------------------------------|-------------|--------------------------------------------|------------|-------------------------------------------------|
| BURGLARY & VEHICLE CRIME | | | | | |
| 3.1 | Invest in improved Automatic Number Plate Recognition infrastructure for the District minimum of 4 additional cameras (2 sites) | Police | Community Safety Partnership | March 2012 | Safer & Stronger Funding Police |
| 3.2 | Increase crime reduction interventions in wards identified as priorities. Reduce vehicle crime and burglary by 5% in identified priority ward's through crime reduction initiatives. | CSU | CSU | March 2012 | Existing resources and Safer & Stronger Funding |
| 3.3 | Refer to T&CG suitable suspected disposal points for stolen property within the District for partnership intervention and measure proportion identified as successfully disrupted | Police | T&CG | March 2012 | Existing resources |
| 3.4 | Undertake four Multi Agency operation at boot fairs to deter/detect the disposal of stolen/counterfeit goods and provide relevant crime prevention advice. | CSU | Police Trading Standards KCC Wardens | March 2012 | Existing resources |

Public perception

Respondents to the September 2010 Residents Panel Survey were asked how safe or unsafe they feel when outside in their local area during the day and after dark.

- 93% of respondents felt either “very safe” or “safe” in their local area during the day.
- 69% of respondents felt either “very safe” or “safe” in their local area after dark
- 7% of respondents felt either “very safe” or “safe” in their local area during the day
- 11% of respondents felt “very unsafe” or “unsafe” in their local area after dark.

The Kent Crime & Victimization Survey indicates that the District’s perceptions of Anti-Social Behaviour are better than the County average and are improving. The District is between first and fourth best in the County in most categories, with the exception of vandalism and graffiti which is 6th and abandoned and burnt out cars which was 11th. The Partnership continues to put in place initiatives that help people to feel safe and live in safe environments and to keep people informed and involved in community safety.

| Priority Action | Lead Agency | Other Partners | By When | Funding | |
|--------------------------|-------------------------------------------------------------------------------------------------------------------------------------------------------------------------------------------------------------------|----------------|---------------------------------------------------|----------------|------------------------------------------------------------|
| PUBLIC PERCEPTION | | | | | |
| 4.1 | Maximise the use of the Probation Service’s Community Payback scheme. Measure the number of initiatives completed and financial savings made. | CSU | Probation | March 2012 | Negative cost because of the value of the work undertaken. |
| 4.2 | Undertake at least one Environmental Audit (EVA) in each identified priority ward in conjunction with local businesses and residents. Implement an action plan for each EVA which must be at least 80% completed. | CSU T&CG | Highways, Police, Housing, Town & Parish Councils | March 2012 | Existing resources and Safer & Stronger funding |
| 4.3 | Re-evaluate and update Communications Protocol | Exec Group | CSP | June 2011 | Existing resources |
| 4.4 | Develop Community Safety Twitter | SDC | CSP | September 2011 | Existing resources |
| 4.5 | Ensure CSU quarterly reports are accessible to local communities through town and parish council websites, where possible and other agency websites. | CSU | | June 2011 | Existing resources |

| | Priority Action | Lead Agency | Other Partners | By When | Funding |
|-----|------------------------------------------------------------------------------------------------------------------------------------------------------------------------------------------------------------------------------------|------------------------------------|--------------------------------------------|----------------|----------------------------------------|
| 4.6 | Three Community Awareness Days to be arranged throughout the District . | Community Safety Partnership (CSP) | Town & Parish Councils Local Businesses | March 2012 | Existing resources |
| 4.7 | Reduce the impact of fly-tipping on the environment by encouraging the reporting of fly-tipped materials, cleaning up fly tipping from public land and highways within 7 days of reporting and implementing the use of Smart Water | CSU | Direct Services KCC Highways | June 2011 | Existing resources and Clean Kent fund |
| 4.8 | Recognise local people who have volunteered for their communities or who have taken a stand against anti-social behaviour by nominating them for awards. | SDC Community Development | Crime Prevention Panel | March 2012 | Existing resources |

Speeding Vehicles

Speeding vehicles are consistently highlighted as one of the key community priorities in the majority of PACT Neighbourhood Panels across the District. This high level of community concerns coupled with the continued value of effective partnership working, mean that this area will remain a priority for the Sevenoaks CSP.

| Priority Action | | Lead Agency | Other Partners | By When | Funding |
|-----------------|-----------------------------------------------------------------------------------------------------------------------------------------|---------------------------------------------------------|---------------------------------------------------------------|------------|--------------------|
| SPEEDING | | | | | |
| 5.1 | Roll out “carmageddon”(operation to deter reckless driving) to at least 5 identified hot spot areas and include other partner agencies. | Kent Fire & Rescue Service T&CG CSU | Exec Group Highways Police Council Youth Services | March 2012 | Existing resources |
| 5.2 | Promote speed watch across the District including training for volunteers | Kent Police – Training CSU – Promotion/Volunteers | DVLA | March 2012 | Existing resources |
| 5.3 | Continue to roll out OP Zig Zag (operation to deter parking outside schools) where it is reported by communities as a problem | KCC CSU | SDC – Parking Police Schools | March 2012 | Existing resources |

Substance Misuse

The Kent Drug and Alcohol Action Team (KDAAT) reported a 13% increase in the number of Sevenoaks clients between 2008/9 and 2009/10. This may be attributable to better access to services in the District. Alcohol accounts for 40% of KDAAT clients. Although Sevenoaks' figures are low for alcohol attributable hospital admissions, there has been a slight increase in alcohol related mortality. As part of the Kent Crime and Victimization Survey, people were asked whether people using or dealing drugs was a very or fairly big problem in their local area. The results show that Sevenoaks ranks 2nd best in the County with a figure of 6.5% which is an improvement of 2.6% when compared to the same period last year. Given the link between substance misuse, particularly alcohol, and other crime types, the Partnership will continue to prioritise this area of its work.

| Priority Action | Lead Agency | Other Partners | By When | Funding | |
|-------------------------|---------------------------------------------------------------------------------------------------------------------------------------------|----------------------------------------------|------------------------------------------------------------------------------------------------------------------------|---------------------------------------|-----------------------------------------------------|
| SUBSTANCE MISUSE | | | | | |
| 6.1 | Implement a shared training package around identification and brief advice (IBA) | Substance Misuse Task Group | Tier 1 & 2 workers substance misuse workers (information and advice) PCSO, Warden, PCT Health & well being | July 2011 Roll out Sept 2011 | Existing CSP Budget Partners Training Budgets |
| 6.2 | Structured Early Intervention Projects to include referrals to Alcohol Clinics and targeted Young Peoples Intervention through T&CG and CSU | Kenward Trust or alternative provider CSU | Kenward Trust KDAAT T&CG | March 2012 | Choosing Health CSP Alternative funding |
| 6.3 | Address Underage Drinking where it is reported by communities as a problem | Trading Standards | Landlords/Off License Substance Misuse Task Group KDAAT Police | Ongoing | Existing budgets |

Domestic Abuse

The number of domestic abuse incidents has increased by 5.0%. This is an increase of 41 incidents from 827 in the previous period to 868 in this period but is the lowest per 1,000 population in the County. There were 201 recorded repeat victims of domestic abuse, again the lowest rate in the County. This gives a repeat victim percentage of 23.2% which is in line with the County average. Only 13% of respondents to the Residents Panel survey said they were concerned about domestic abuse. Whilst this indicates a low level of concern among local residents, Domestic Abuse tends to be a 'hidden crime' with low levels of reporting.

| | Priority Action | Lead Agency | Other Partners | By When | Funding |
|-----------------------|--------------------------------------------------------------------------------------------------|--------------------------------------|--------------------------------------------------------|----------------------------------------------------|---------------------------------------------------------------------|
| DOMESTIC ABUSE | | | | | |
| 7.1 | Raise awareness and sign posting to services through the West Kent Directory and the CSP website | CSP Domestic Abuse Task Group | Tier 1 workers Health provider Police Housing | Prog July 2011 Roll out Sept – March 2011/12 | Existing resources |
| 7.2 | Consider how best to provide advocacy services | Exec Group Domestic Abuse Task Group | Voluntary sector | June 2011 | Funding to be identified, possibly through Safer & Stronger Funding |
| 7.3 | Training for front line workers including good practice guidelines for working with survivors | CSP Domestic Abuse Task Group | Tier 1 workers Health provider Police Housing | Prog July 2011 Roll out Sept – March 2011/12 | Existing resources |
| 7.4 | Work with young people to improve self esteem and respect | Local Children's Trust Board | Youth Workers Youth Offending Service | March 2012 | Existing resources |
| 7.5 | At least 3 perpetrators to complete the full Community Domestic Abuse Perpetrators' Programme | Police Social Services CSU | CSP | March 2012 | Choosing Health Safer & Stronger Funding |

GLOSSARY:

ANPR – Automatic Number Plate Recognition

CCTV – Closed Circuit Television

CDAP – Community Domestic Abuse Perpetrators Programme

CSP – Community Safety Partnership

CSU – Community Safety Unit

EVA – Environmental Visual Audit

KCC – Kent County Council

KDAAT – Kent Drug & Alcohol Action Team

MSG – A Group of Partnerships thought by the Home Office to have similar characteristics and used for benchmarking purposes.

PACT – Partners and Communities Together

PCT – Primary Care Trust

SDC – Sevenoaks District Council

T&CG – Tasking and Co-ordination Group – monthly meeting to plan response to trends

YOS – Youth Offending Service

Membership of the Community Safety Partnership and contact details

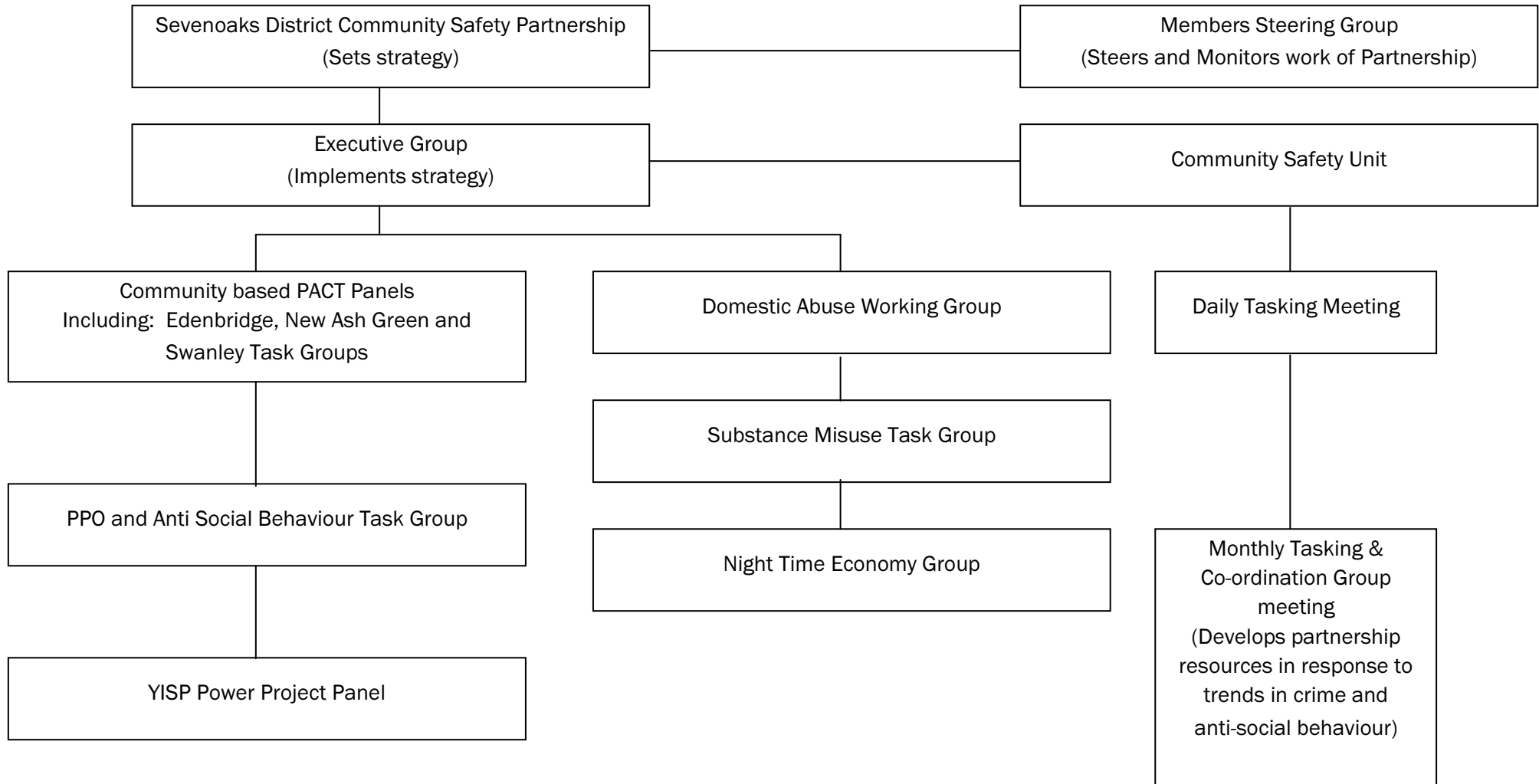
| | | | |
|-------------------------------------------------------------------------------------------------------------------------------------------------------------------------------------------------|----------------------------------------------------------------------------------------------------------------------------------------------------------------------------------------------|--------------------------------------------------------------------------------------------------------------------------------------------------------------------------------------------------------------|--------------------------------------------------------------------------------------------------------------------------------------------------------------------------------------------------------------------------------|
| <p>Sevenoaks District Council Argyle Road Sevenoaks Kent TN13 1GP Tel: 01732 227000 Web: www.sevenoaks.gov.uk</p> | <p>Kent Police 1 Pembury Road Tonbridge Kent TN9 2HS Tel: 01622 690690 Web: www.kent.police.uk</p> | <p>Kent Fire & Rescue Service South Division HQ, Loose Road Maidstone Kent ME15 9QB Tel: 01622 774500 Web: www.kent.fire-uk.org</p> | <p>Kent Police Authority 1st Floor, Gail House Lower Stone Street Maidstone ME15 6NB Tel: 01622 677055 Web: www.kentpa.kent.police.uk</p> |
| <p>NHS West Kent Wharf House, Medway Wharf Road Tonbridge Kent TN9 1RE Tel: 01732 375200 Web: www.westkentpct.nhs.uk</p> | <p>Kent Probation Service 17 Garden Road Tunbridge Wells Kent TN1 2XP Tel: 01892 559350 Web: www.kentprobation.org</p> | <p>KCC Social Services Croft House, East Street Tonbridge Kent TN9 1HP Tel: 01732 362442 Web: www.kent.gov.uk</p> | <p>KCC Families and Social Care 30 Gibson Drive West Malling Kent ME19 4QG Tel: 08458 247247 Web: www.kent.gov.uk</p> |
| <p>KCC Youth Offending Service Croft House, East Street Tonbridge Kent TN9 1HP Tel: 01732 362442 Web: www.kent.gov.uk</p> | <p>KCC Youth Service Bishops Terrace, Bishops Way Maidstone Kent ME14 1AF Tel: 08458 247 247 Web: www.kent.gov.uk</p> | <p>KCC Trading Standards PO Box 286 West Malling Kent ME19 4HW Tel: 01732 525291 Web: www.kent.gov.uk</p> | <p>KCC Community Safety Sessions House County Hall Maidstone ME14 1XQ Tel: 01622 696575 Web: www.kentpartnership.org.uk</p> |
| <p>West Kent Housing Association 101 London Road Sevenoaks Kent TN13 1AX Tel: 01732 749400 Web: www.westkent.org</p> | <p>Kenward Trust Kenward Road Yalding Maidstone Kent ME18 6AH Tel: 01622 814187 Web: www.kenwardtrust.org.uk</p> | <p>MOAT Homes Galleon Boulevard Crossways Dartford Kent DA2 6QE Tel: 0845 600 1006 Web: www.moat.co.uk</p> | <p>Kent Drug and Alcohol Action Team Invicta House, 3rd Floor County Road Maidstone Kent ME14 1XX Tel: 01622 221676 Web: www.kdaat.org</p> |
| <p>West Kent Extra 101 London Road Sevenoaks Kent TN13 1AX Tel: 01732 749400 Web: www.westkent.org</p> | <p>Voluntary Action West Kent 19 Monson Road Tunbridge Wells Kent TN1 1LS Tel: 01892 530330 Web: www.vawk.org.uk</p> | | |

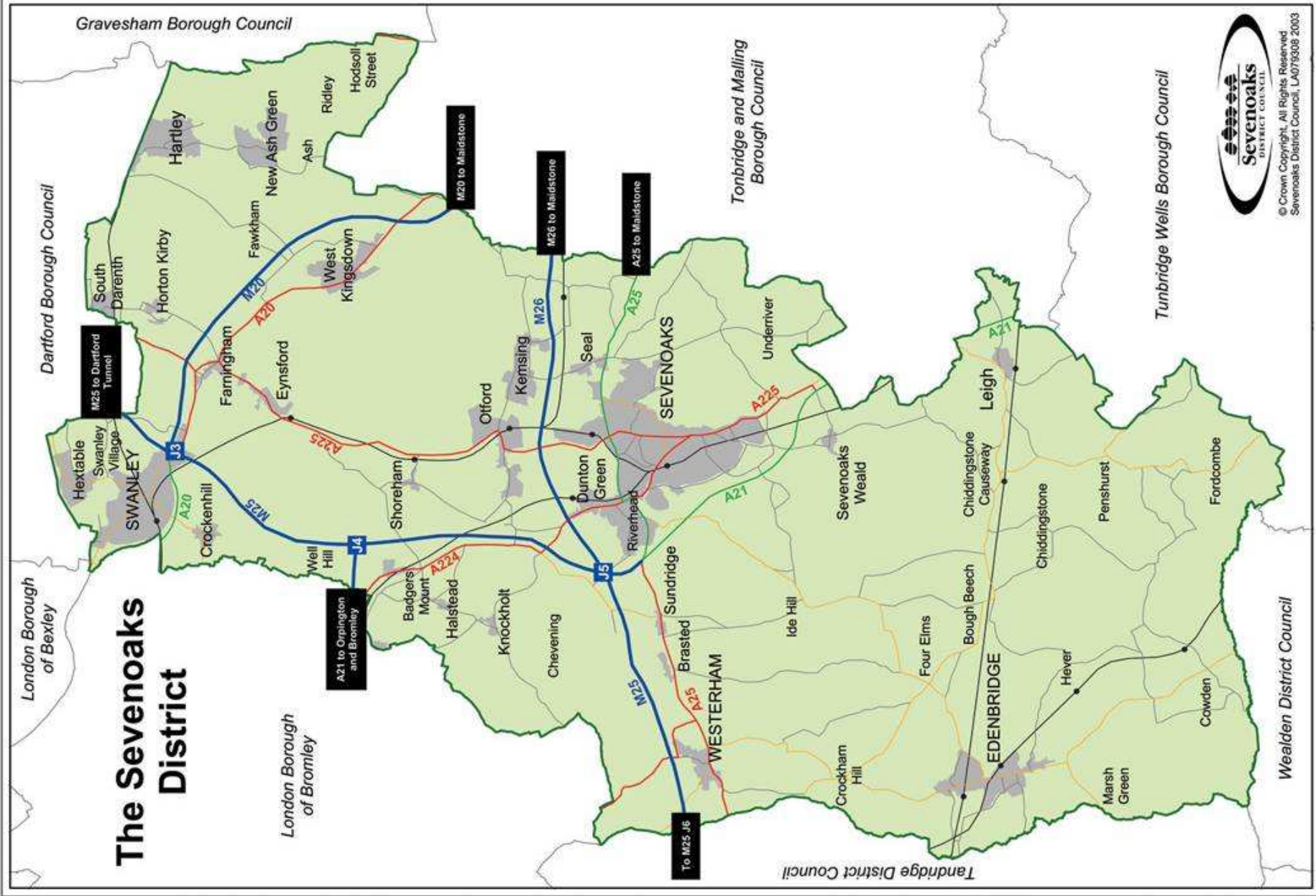
Terms of Reference

The Partnership's terms of reference are to:

- Undertake periodic reviews of community safety in the District and disseminate the findings to the public
- Develop a yearly strategy and action plan to tackle community safety
- Monitor and report progress in meeting the agreed targets and actions
- Secure resources and funding from parent organisations and others for projects to address agreed shared priorities in the Community Safety Action Plan
- Act as a forum for discussion of topical local community safety issues and agree follow up actions if appropriate
- Promote community safety in the District in conjunction with other local organisations and bodies
- Co-ordinate and maintain an overview of all activities relevant to community safety in the District.

Structure of Sevenoaks District Community Safety Partnership





© Crown Copyright. All Rights Reserved.
Sevenoaks District Council, LA079308 2003

Enquiries to:

Community Safety Co-ordinator
Sevenoaks District Council
PO Box 183, Argyle Road
Sevenoaks, Kent TN13 1GP
Telephone 01732 227000
Fax 01732 742339
Minicom 01732 227496
E-mail community.safety@sevenoaks.gov.uk



